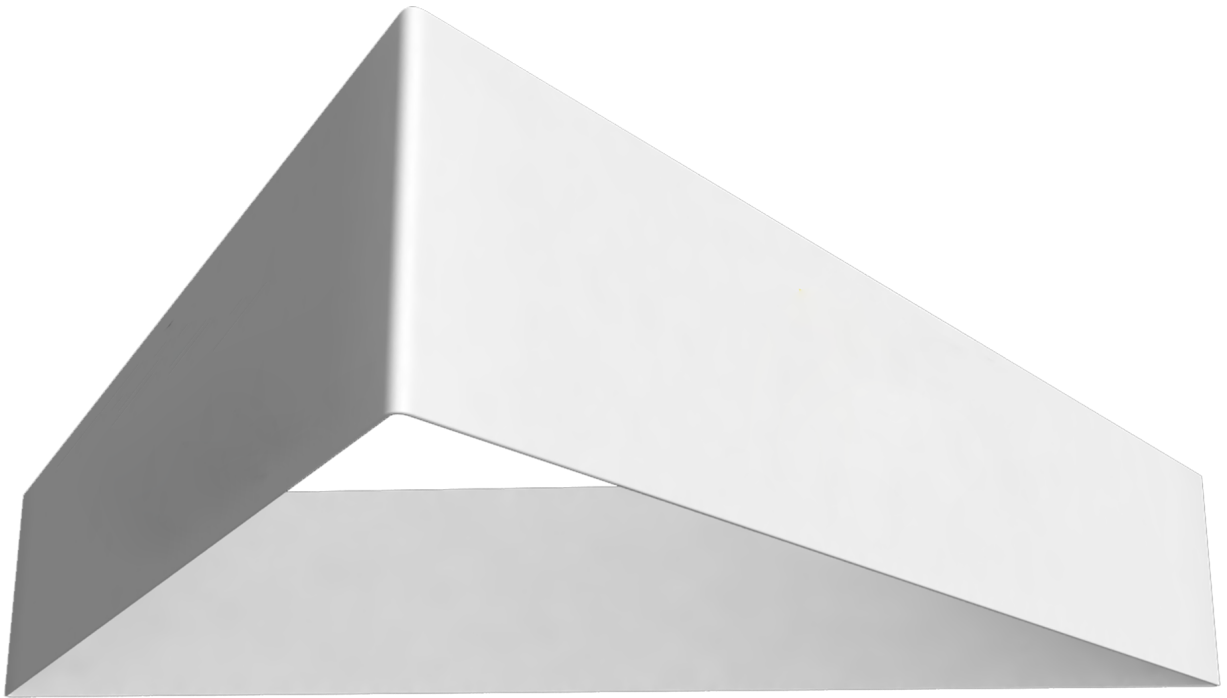


TEXstyle Suspend - Triangle

FEATURES AND BENEFITS

- Triangular shaped hanging frame designed for use above exhibition stands to increase visibility!
- Available in 3 sizes
- Sturdy aluminium frame
- Quick set up using TEXstyle's unique clip together system



PRODUCT DETAILS		HARDWARE SPECIFICATIONS		GRAPHIC SPECIFICATIONS
Description	Order Code	Dimensions (mm)	Weight (kg)	Dimensions (mm)
Triangle—10ft	INE184239	3048 (D) x 1067 (H)	8.8	9144 (L) x 1067 (H)
Triangle—14ft	INE184242	4267 (D) x 1067 (H)	12.7	12801 (L) x 1067 (H)
Triangle—20ft	INE184245	6096 (D) x 1219 (H)	16	18288 (L) x 1219 (H)

We operate a policy of continuous improvement and we reserve the right to alter products and specifications to reflect this without prior notice. Any information given either verbally or in writing is approximate only and given in good faith and does not constitute terms or part of any contract. We do not accept liability for variance including direct, indirect or consequential loss. The customer is deemed to have determined the suitability of the product for the use intended and assumes all associated risks and liabilities in connection with specifying, using or being unable to use any of the products.

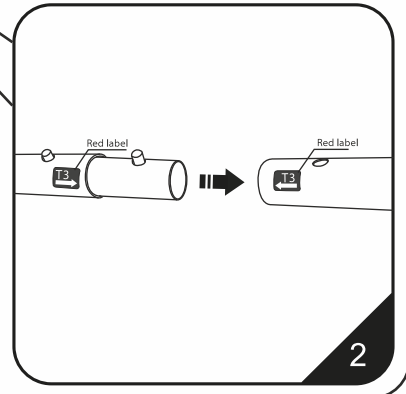
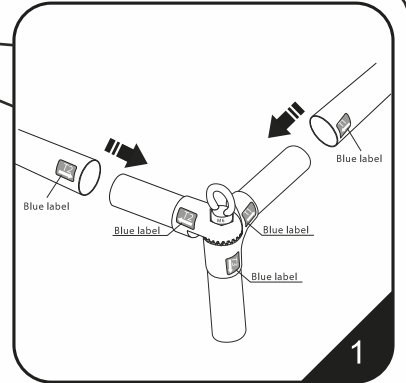
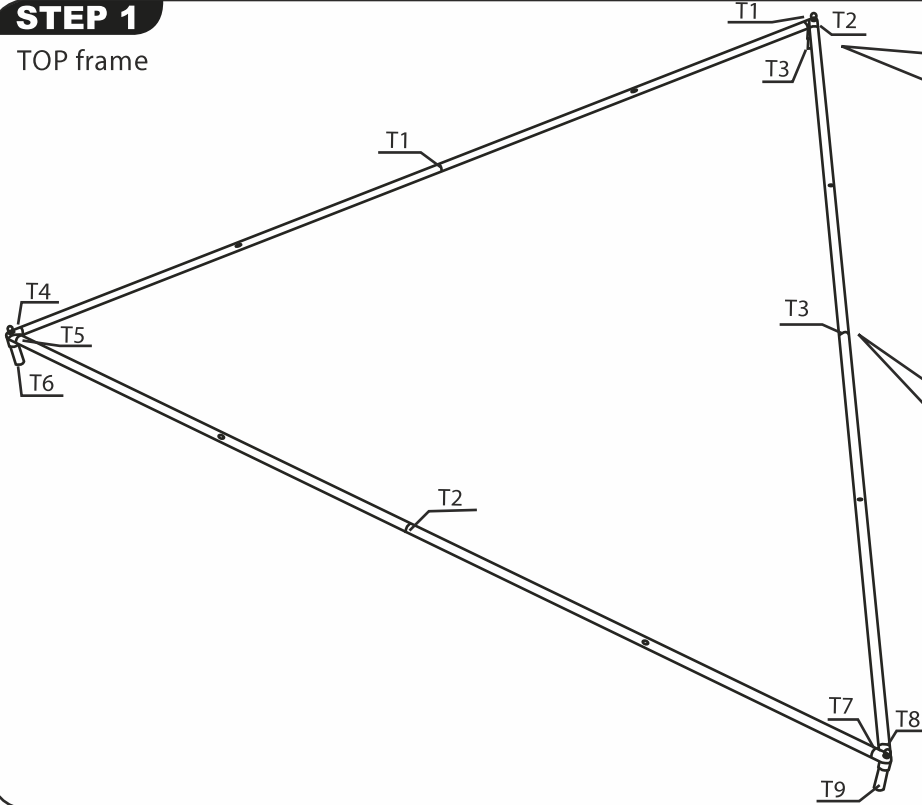


Enseigne textile suspendue triangulaire

Notice de montage

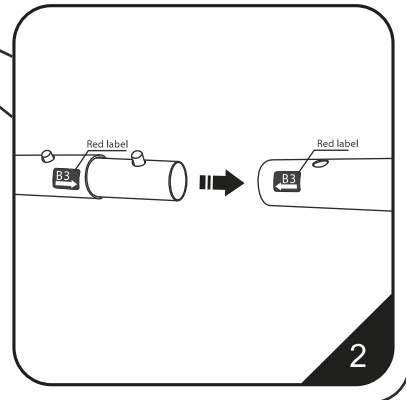
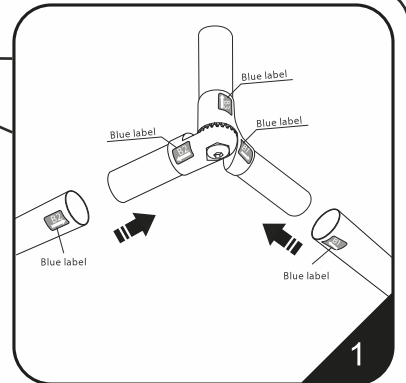
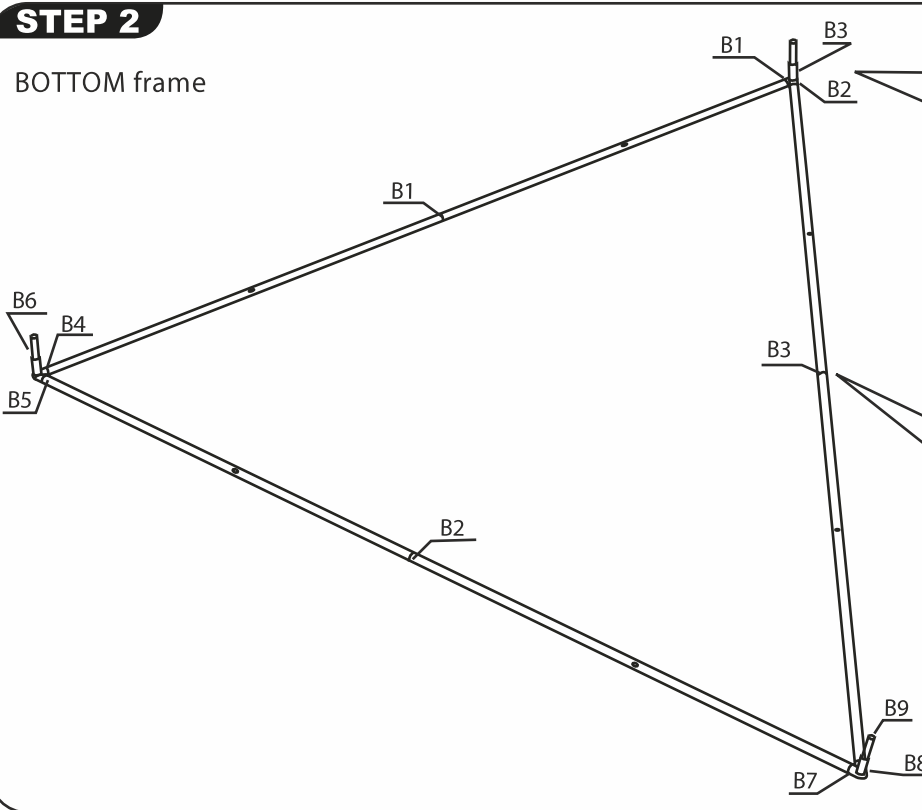
STEP 1

TOP frame

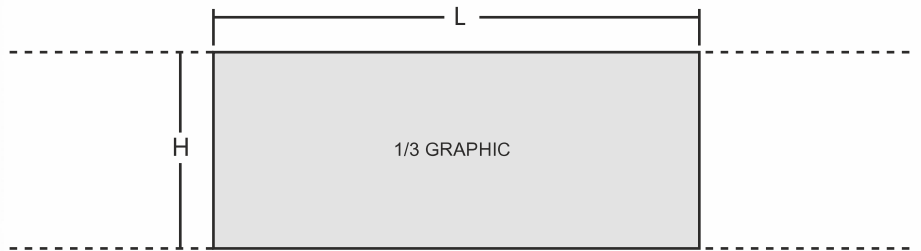
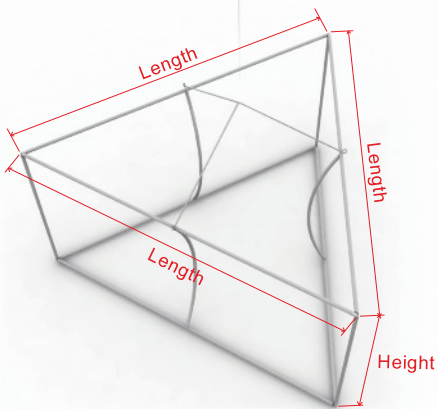
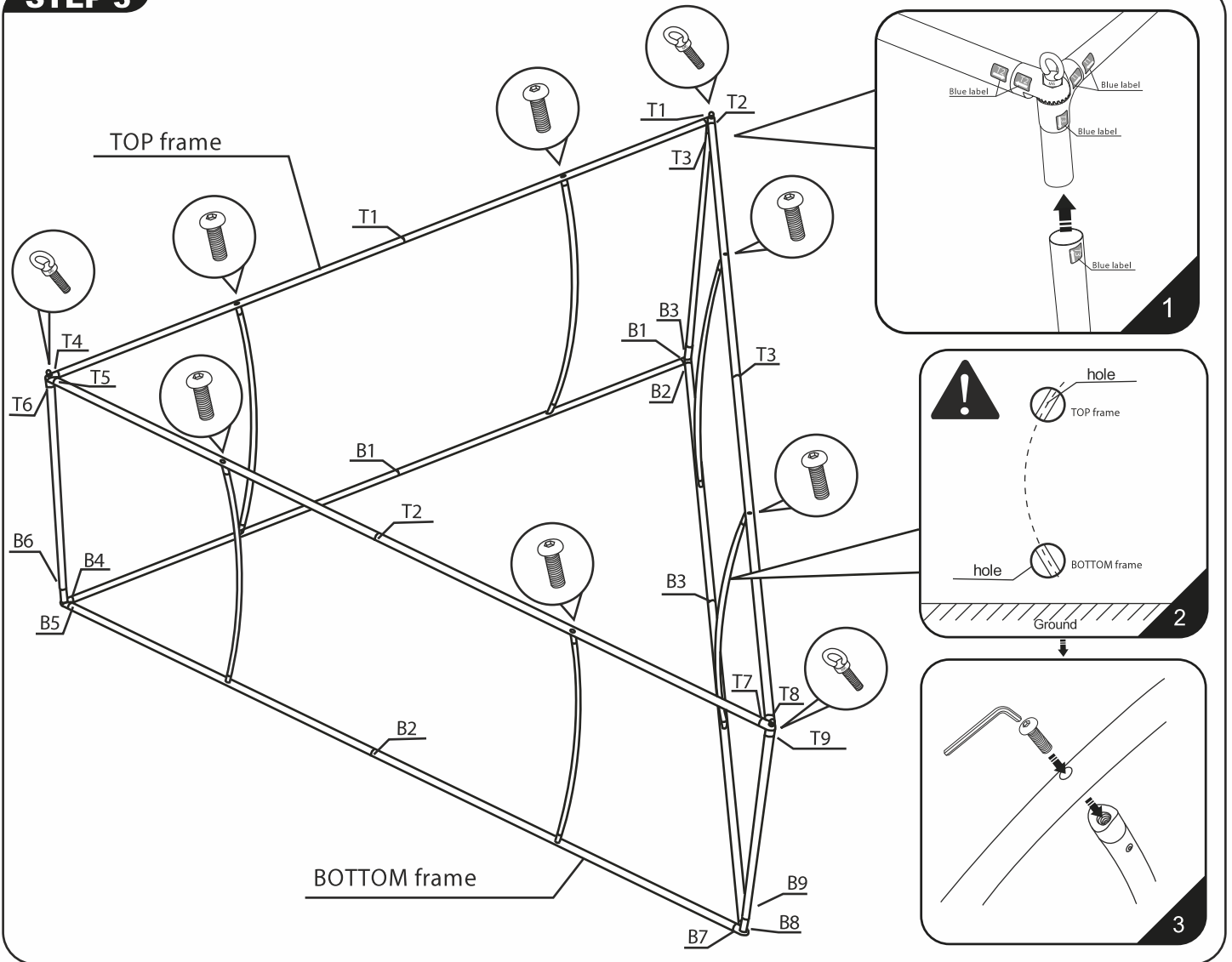


STEP 2

BOTTOM frame



STEP 3



Frame Size: 10'(3048mm).L x 3.5'(1067mm).H
 14'(4267mm).L x 3.5'(1067mm).H
 20'(6096mm).L x 4'(1219mm).H

1/3 Graphic Size: 3048mm.L X 1067mm.H
 4267mm.L X 1067mm.H
 6096mm.L X 1219mm.H



CAUTION:
PLEASE READ THE INSTRUCTIONS BEFORE INSTALLING PRODUCT